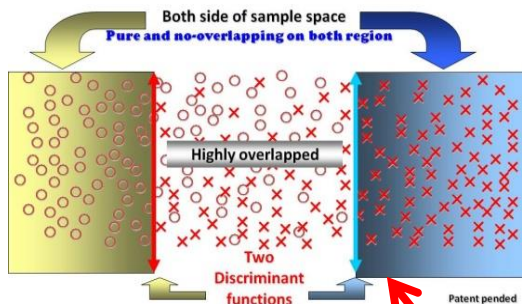
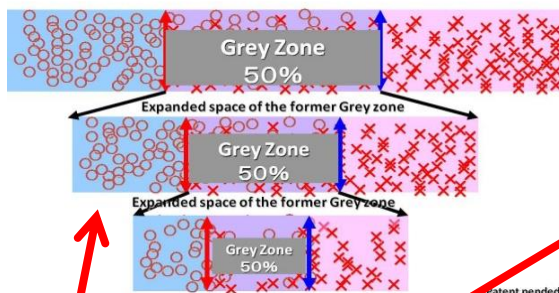


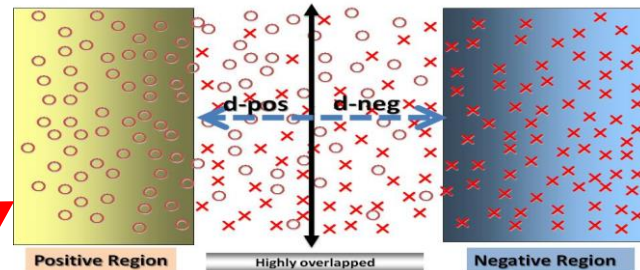
First basic concept of KY method Spatial region on sample space



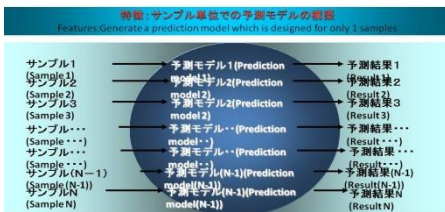
Second basic concept of KY method Multi-steps for 100% classification



New approach to the "KY method" by one discriminant function

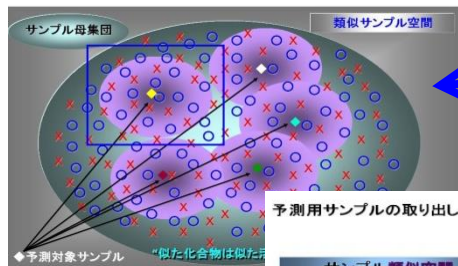


「テーラーメイド・モデリング」による予測アプローチ
(Prediction approach by "Tailor-Made Modeling")

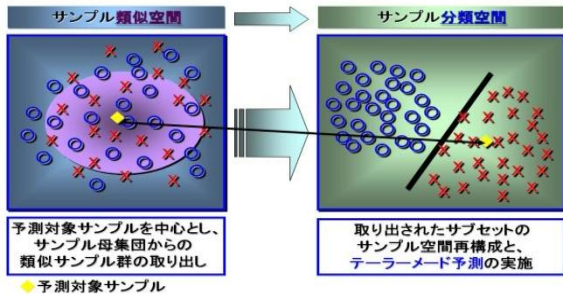


利点 (Merit) : 予測率が大幅に向上する (High prediction ratio will be achieved)
難点 (Weakness): 計算時間がかかる (Need large calculation time)

サンプル母集団からの予測用サンプルの取り出し



予測用サンプルの取り出しと、テーラーメイド予測



A series of KY methods

Discriminant Analysis	Fitting
Two model KY	KY Fitting with DA
Single model KY	KY Fitting with no DA
Model free KY	Model free KY Fitting

*Always carry perfect classification

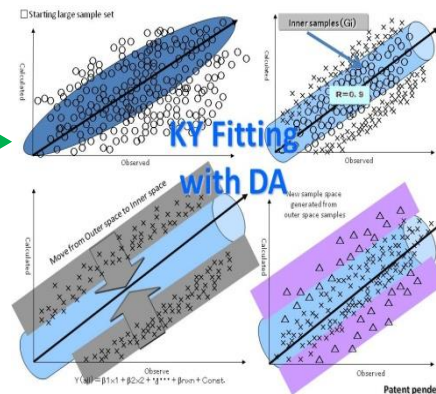
*Always high coefficient of determination

Discriminant Analysis	Fitting
Tailor-made Modeling for DA	Tailor-made Modeling for Fitting

*Always carry high prediction ratio

All methods were Patent Pending

In Silico Data
Miracled by the KY-methods

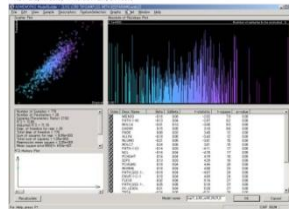


◆KY method for fitting methods (Will be soon coming)

Fish 95 hours LCD. Number of samples: 791. Log(LCD), Min (Max/Mix): 4.376 / 2.963

◆Data analysis by ordinal linear regression

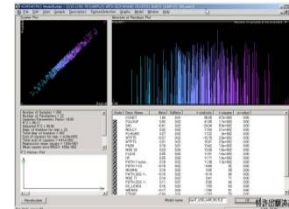
Step1: Inner sample set
Number of samples: 795. Number of used parameters: 28. Confidence ratio: 27.8
R2: 72.8, R: 85.1, F-value: 71.7, CV: 69.6



◆フィッティングKY法実証実験(2)

◆フィッティングKY法による解析(ステージ1)

ステップ1: インナーサンプル
サンプル数: 306, パラメータ数: 22, 信頼性指標: 18.1
R2: 96.2, R: 98.1, F値: 428, クロスバリデーション: 94.4



◆フィッティングKY法実証実験(3)

◆フィッティングKY法による解析(ステージ1)

ステージ1: アウターサンプル
サンプル数: 393, パラメータ数: 29, 信頼性指標: 13.6
R2: 64.7, R: 80.4, F値: 22.9, クロスバリデーション: 67.5

